

Northwest Workforce Investment Area (WIA)

Agriculture and Food Production (AFP)

Industries Showing...*

...Employment Growth

Dog and cat food manufacturing
 Veterinary services
 General line grocery merchant wholesalers
 Commercial bakeries
 Mayonnaise, dressing, and sauce manufacturing

... Employment Decline

Supermarkets and other grocery stores
 Fresh and frozen seafood processing
 Convenience stores
 Frozen cakes and other pastries manufacturing
 Soft drink manufacturing

Notes:

*Employment growth and decline determined from 1995 to 2006.

**This graph displays the percent change of each year compared to the base year of 1995.

***Based on occupations from the statewide High Priority Occupations list effective July 1, 2007 through June 30, 2008.



CENTER FOR
WORKFORCE INFORMATION
 AND ANALYSIS

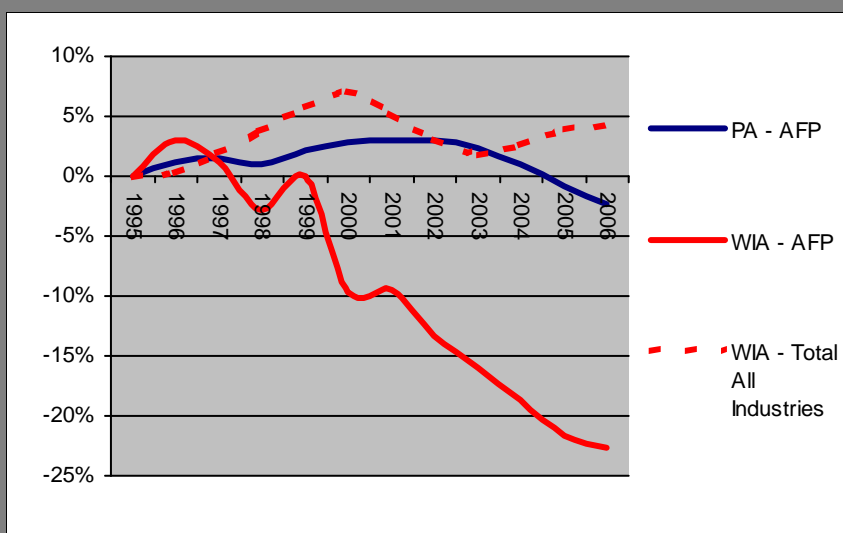
Department of Labor & Industry
www.paworkstats.state.pa.us
 Email: workforceinfo@state.pa.us
 Toll-free: 877-493-3282

December 2007

AFP Cluster Statistics

WIA Cluster Employment (2006)	9,119
Percent of Total Area Employment (2006)	4.29%
Employment Growth (1995-2006)	-2,676
Employment Percent Growth (1995-2006)	-22.69%
Average Annual Wage (2006)	\$25,975
Average Size of Employer Units (2006)	20.0

Percent Change in Employment from 1995**



Select High Priority Occupations***

Sales Representatives
 Truck Drivers, Heavy & Tractor-Trailer
 General & Operations Managers
 Industrial Truck & Tractor Operators
 Truck Drivers, Light or Delivery Services
 Food Batchmakers
 Driver/Sales Workers
 Butchers & Meat Cutters
 Packaging & Filling Machine Operators/Tenders
 Veterinary Technologists & Technicians

Northwest Workforce Investment Area (WIA)

Agriculture and Food Production - Food Processing (AFP-FP)

Industries Showing...*

...Employment Growth

Dog and cat food manufacturing
 Commercial bakeries
 Mayonnaise, dressing, and sauce manufacturing
 Confectionery mfg. from purchased chocolate
 Frozen fruit and vegetable manufacturing

... Employment Decline

Fresh and frozen seafood processing
 Frozen cakes and other pastries manufacturing
 Soft drink manufacturing
 Frozen specialty food manufacturing
 Meat processed from carcasses

Notes:

*Employment growth and decline determined from 1995 to 2006.

**This graph displays the percent change of each year compared to the base year of 1995.

***Top occupations selected by percent of employment and number of openings.



CENTER FOR
WORKFORCE INFORMATION
 AND ANALYSIS

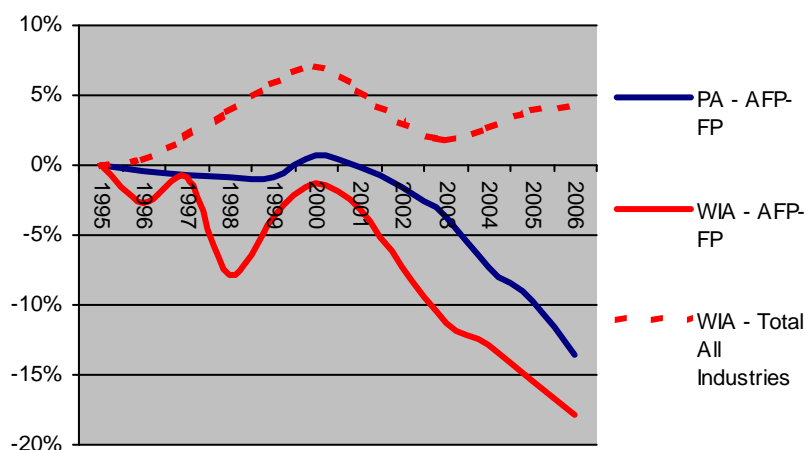
Department of Labor & Industry
www.paworkstats.state.pa.us
 Email: workforceinfo@state.pa.us
 Toll-free: 877-493-3282

December 2007

AFP-FP Cluster Statistics

WIA Cluster Employment (2006)	2,326
Percent of Total Area Employment (2006)	1.09%
Employment Growth (1995-2006)	-507
Employment Percent Growth (1995-2006)	-17.90%
Average Annual Wage (2006)	\$35,815
Average Size of Employer Units (2006)	40.1

Percent Change in Employment from 1995**



Select Top Occupations***

Packers & Packagers, Hand
 Laborers & Freight, Stock & Material Movers
 Bakers
 Food Batchmakers
 Helpers--Production Workers
 Packaging & Filling Machine Operators/Tenders
 Meat, Poultry & Fish Cutters & Trimmers
 Truck Drivers, Heavy & Tractor-Trailer
 Industrial Truck & Tractor Operators
 Retail Salespersons

Northwest Workforce Investment Area (WIA)

Advanced Materials and Diversified Manufacturing (AMDM)

Industries Showing...*

...Employment Growth

Precision turned product manufacturing
 Iron and steel mills
 Commercial screen printing
 Printed circuit assembly manufacturing
 Iron, steel pipe and tube from purchase steel

... Employment Decline

Railroad rolling stock manufacturing
 All other plastics product manufacturing
 Industrial mold manufacturing
 Iron and steel forging
 Iron foundries

Notes:

*Employment growth and decline determined from 1995 to 2006.

**This graph displays the percent change of each year compared to the base year of 1995.

***Based on occupations from the statewide High Priority Occupations list effective July 1, 2007 through June 30, 2008.



CENTER FOR
WORKFORCE INFORMATION
 AND ANALYSIS

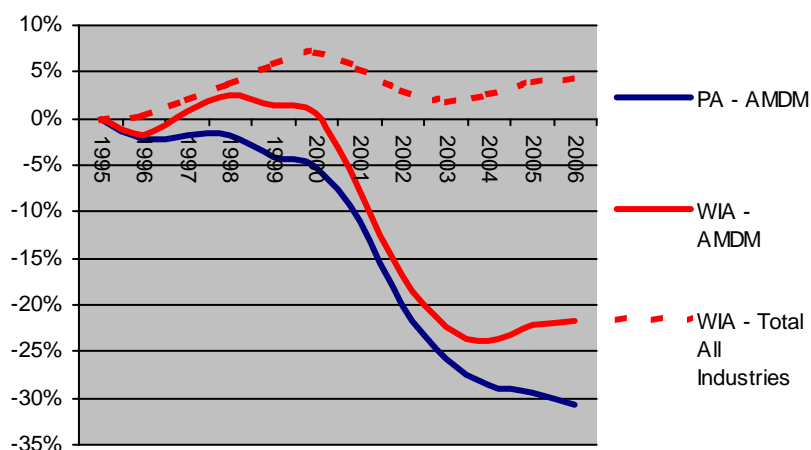
Department of Labor & Industry
www.paworkstats.state.pa.us
 Email: workforceinfo@state.pa.us
 Toll-free: 877-493-3282

December 2007

AMDM Cluster Statistics

WIA Cluster Employment (2006)	33,349
Percent of Total Area Employment (2006)	15.69%
Employment Growth (1995-2006)	-9,283
Employment Percent Growth (1995-2006)	-21.77%
Average Annual Wage (2006)	\$46,149
Average Size of Employer Units (2006)	43.5

Percent Change in Employment from 1995**



Select High Priority Occupations***

Team Assemblers
 Supervisors - Production & Operating Workers
 Machinists
 Laborers & Freight, Stock & Material Movers
 Welders, Cutters, Solderers & Brazers
 Maintenance & Repair Workers, General
 General & Operations Managers
 Sales Representatives
 Industrial Truck & Tractor Operators
 Inspectors, Testers, Sorters, Samplers & Weighers

Northwest Workforce Investment Area (WIA)

Advanced Materials and Diversified Manufacturing - Chemical, Rubber and Plastics (AMDM-CRP)

Industries Showing...*

...Employment Growth

Rubber and plastics hose and belting mfg.
Adhesive manufacturing
Plastics and rubber industry machinery
Tire manufacturing, except retreading
Plastics pipe and pipe fitting manufacturing

... Employment Decline

All other plastics product manufacturing
Rubber product mfg. for mechanical use
Polish and other sanitation good mfg.
Urethane and other foam product manufacturin
Tire retreading

Notes:

*Employment growth and decline determined from 1995 to 2006.

**This graph displays the percent change of each year compared to the base year of 1995.

***Top occupations selected by percent of employment and number of openings.



CENTER FOR
WORKFORCE INFORMATION
AND ANALYSIS

Department of Labor & Industry

www.paworkstats.state.pa.us

Email: workforceinfo@state.pa.us

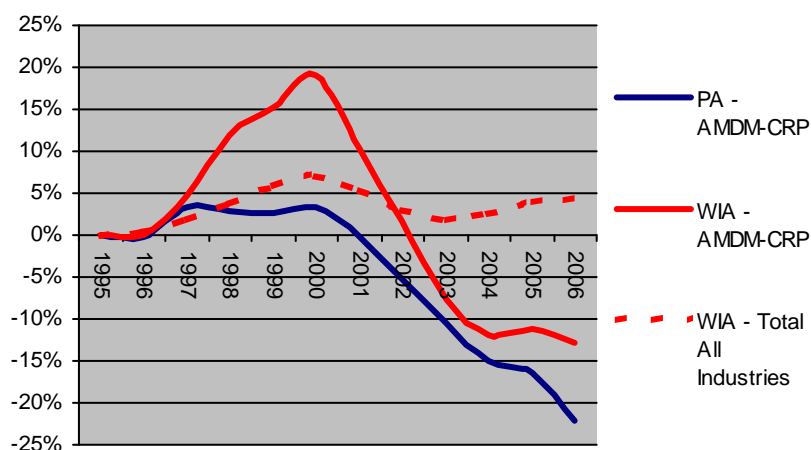
Toll-free: 877-493-3282

December 2007

AMDM-CRP Cluster Statistics

WIA Cluster Employment (2006)	7,400
Percent of Total Area Employment (2006)	3.48%
Employment Growth (1995-2006)	-1,084
Employment Percent Growth (1995-2006)	-12.78%
Average Annual Wage (2006)	\$39,860
Average Size of Employer Units (2006)	66.7

Percent Change in Employment from 1995**



Select Top Occupations***

Team Assemblers
Packers & Packers, Hand
Chemical Equipment Operators & Tenders
Maintenance & Repair Workers, General
Supervisors - Production & Operating Workers
Molding & Casting Machine Oprs, Metal & Plastic
Mixing & Blending Machine Setters/Operators/Tenders
Helpers--Production Workers
Laborers & Freight, Stock & Material Movers
Inspectors, Testers, Sorters, Samplers & Weighers

Northwest Workforce Investment Area (WIA)

Advanced Materials and Diversified Manufacturing - Electronics (AMDM-E)

Industries Showing...*

...Employment Growth

Printed circuit assembly manufacturing
Bare printed circuit board manufacturing
Other electronic component manufacturing
Electronic capacitor manufacturing
Switchgear and switchboard apparatus mfg.

... Employment Decline

Electronic connector manufacturing
Totalizing fluid meters and counting devices
Electric power and specialty transformer mfg.
Electronic resistor manufacturing
Current-carrying wiring device manufacturing

Notes:

*Employment growth and decline determined from 1995 to 2006.

**This graph displays the percent change of each year compared to the base year of 1995.

***Top occupations selected by percent of employment and number of openings.



CENTER FOR
WORKFORCE INFORMATION
AND ANALYSIS

Department of Labor & Industry

www.paworkstats.state.pa.us

Email: workforceinfo@state.pa.us

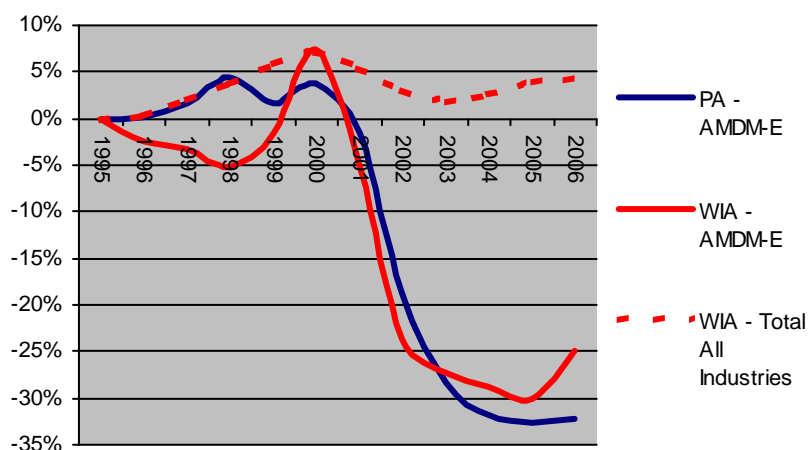
Toll-free: 877-493-3282

December 2007

AMDM-E Cluster Statistics

WIA Cluster Employment (2006)	2,484
Percent of Total Area Employment (2006)	1.17%
Employment Growth (1995-2006)	-823
Employment Percent Growth (1995-2006)	-24.89%
Average Annual Wage (2006)	\$36,804
Average Size of Employer Units (2006)	67.1

Percent Change in Employment from 1995**



Select Top Occupations***

Electrical & Electronic Equipment Assemblers
Team Assemblers
Electrical & Electronic Engineering Technicians
Supervisors - Production & Operating Workers
Electrical Engineers
General & Operations Managers
Inspectors, Testers, Sorters, Samplers & Weighers
Laborers & Freight, Stock & Material Movers
Customer Service Representatives
Maintenance & Repair Workers, General

Northwest Workforce Investment Area (WIA)

Advanced Materials and Diversified Manufacturing - Metals and Metal Fabrication (AMDM-MMF)

Industries Showing...*

...Employment Growth

Precision turned product manufacturing
Iron and steel mills
Iron, steel pipe and tube from purchase steel
Other metal valve and pipe fitting mfg.
Steel investment foundries

... Employment Decline

Iron and steel forging
Iron foundries
Special tool, die, jig, and fixture mfg.
Metal stamping
Power boiler and heat exchanger manufacturing

Notes:

*Employment growth and decline determined from 1995 to 2006.

**This graph displays the percent change of each year compared to the base year of 1995.

***Top occupations selected by percent of employment and number of openings.



CENTER FOR
WORKFORCE INFORMATION
AND ANALYSIS

Department of Labor & Industry

www.paworkstats.state.pa.us

Email: workforceinfo@state.pa.us

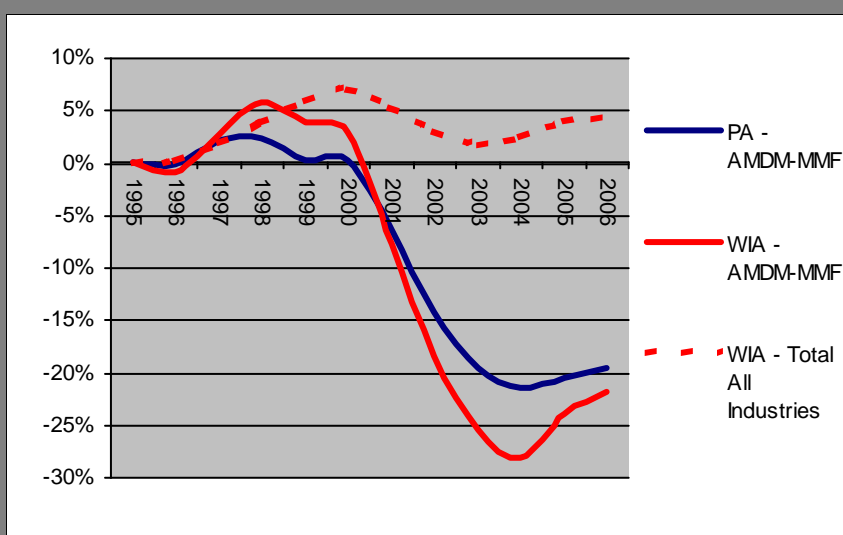
Toll-free: 877-493-3282

December 2007

AMDM-MMF Cluster Statistics

WIA Cluster Employment (2006)	11,770
Percent of Total Area Employment (2006)	5.54%
Employment Growth (1995-2006)	-3,301
Employment Percent Growth (1995-2006)	-21.90%
Average Annual Wage (2006)	\$41,049
Average Size of Employer Units (2006)	30.2

Percent Change in Employment from 1995**



Select Top Occupations***

Machinists
Team Assemblers
Supervisors - Production & Operating Workers
Laborers & Freight, Stock & Material Movers
Welders, Cutters, Solderers & Brazers
Maintenance & Repair Workers, General
General & Operations Managers
Computer-Controlled Machine Tool Operators, Metal & Plastic
Helpers--Production Workers
Industrial Truck & Tractor Operators

Northwest Workforce Investment Area (WIA)

Advanced Materials and Diversified Manufacturing - Printing (AMDM-P)

Industries Showing...*

...Employment Growth

Commercial screen printing
Other commercial printing
Quick printing

... Employment Decline

Commercial lithographic printing
Manifold business forms printing

Notes:

*Employment growth and decline determined from 1995 to 2006.

**This graph displays the percent change of each year compared to the base year of 1995.

***Based on occupations from the statewide High Priority Occupations list effective July 1, 2007 through June 30, 2008.



CENTER FOR
WORKFORCE INFORMATION
AND ANALYSIS

Department of Labor & Industry

www.pa.gov/workstats

Email: workforceinfo@state.pa.us

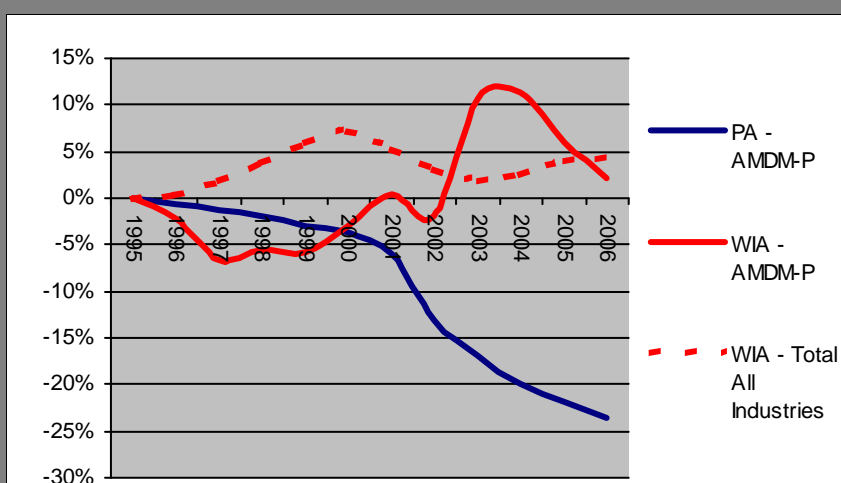
Toll-free: 877-493-3282

December 2007

AMDM-P Cluster Statistics

WIA Cluster Employment (2006)	701
Percent of Total Area Employment (2006)	0.33%
Employment Growth (1995-2006)	14
Employment Percent Growth (1995-2006)	2.04%
Average Annual Wage (2006)	\$31,107
Average Size of Employer Units (2006)	15.9

Percent Change in Employment from 1995**



Select High Priority Occupations***

Printing Machine Operators
Sales Representatives
Prepress Technicians & Workers
Customer Service Representatives
Job Printers
Desktop Publishers
General & Operations Managers
Supervisors - Production & Operating Workers
Graphic Designers

Northwest Workforce Investment Area (WIA)

Building and Construction (BC)

Industries Showing...*

...Employment Growth

Prefabricated wood building manufacturing
 Manufactured home, mobile home, manufacturi
 Fabricated structural metal manufacturing
 Residential site preparation contractors
 Highway, street, and bridge construction

... Employment Decline

Flat glass manufacturing
 Nonresidential electrical contractors
 Commercial building construction
 Construction sand and gravel mining
 AC, refrigeration, and forced air heating

Notes:

*Employment growth and decline determined from 1995 to 2006.

**This graph displays the percent change of each year compared to the base year of 1995.

***Based on occupations from the statewide High Priority Occupations list effective July 1, 2007 through June 30, 2008.



CENTER FOR
WORKFORCE INFORMATION
 AND ANALYSIS

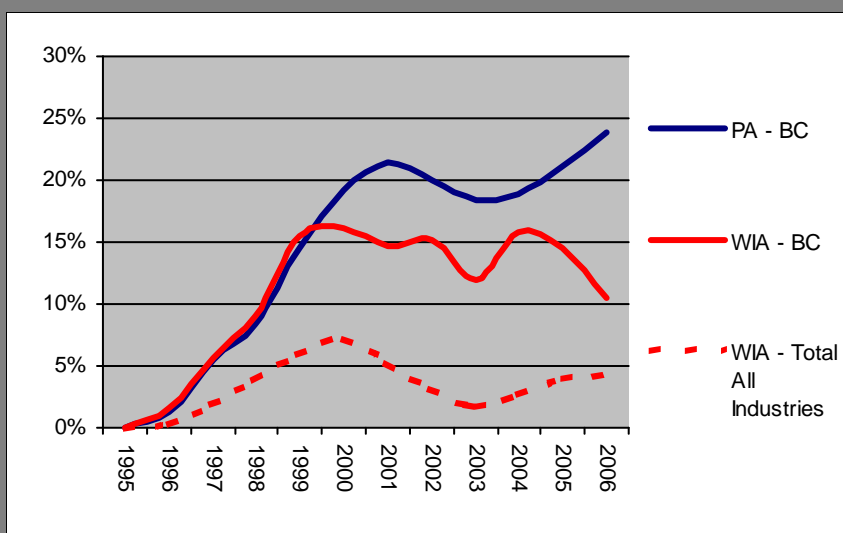
Department of Labor & Industry
www.paworkstats.state.pa.us
 Email: workforceinfo@state.pa.us
 Toll-free: 877-493-3282

December 2007

BC Cluster Statistics

WIA Cluster Employment (2006)	11,258
Percent of Total Area Employment (2006)	5.30%
Employment Growth (1995-2006)	1,072
Employment Percent Growth (1995-2006)	10.52%
Average Annual Wage (2006)	\$36,256
Average Size of Employer Units (2006)	9.0

Percent Change in Employment from 1995**



Select High Priority Occupations***

Carpenters
 Electricians
 Plumbers, Pipefitters & Steamfitters
 Supervisors - Construction Trades & Extraction Workers
 Construction Laborers
 Operating Engineers
 General & Operations Managers
 Sales Representatives
 Laborers & Freight, Stock & Material Movers
 Roofers

Northwest Workforce Investment Area (WIA)

Business and Financial Services (BFS)

Industries Showing...*

...Employment Growth

Temporary help services
Telemarketing bureaus
Direct property and casualty insurers
Managing offices
Savings institutions

... Employment Decline

Commercial banking
Security guards and patrol services
Employment placement agencies
Lessors of nonresidential buildings
Third party administration of insurance funds

Notes:

*Employment growth and decline determined from 1995 to 2006.

**This graph displays the percent change of each year compared to the base year of 1995.

***Based on occupations from the statewide High Priority Occupations list effective July 1, 2007 through June 30, 2008.



CENTER FOR
WORKFORCE INFORMATION
AND ANALYSIS

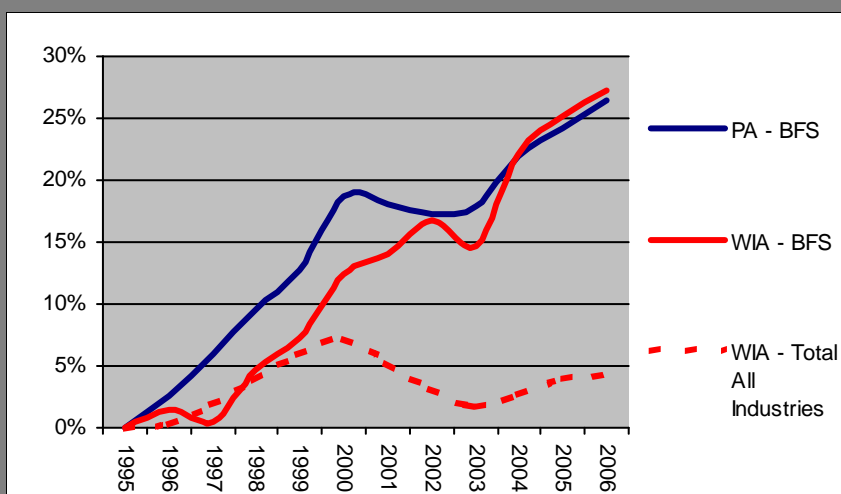
Department of Labor & Industry
www.paworkstats.state.pa.us
Email: workforceinfo@state.pa.us
Toll-free: 877-493-3282

December 2007

BFS Cluster Statistics

WIA Cluster Employment (2006)	23,685
Percent of Total Area Employment (2006)	11.14%
Employment Growth (1995-2006)	5,070
Employment Percent Growth (1995-2006)	27.24%
Average Annual Wage (2006)	\$34,061
Average Size of Employer Units (2006)	12.0

Percent Change in Employment from 1995**



Select High Priority Occupations***

Customer Service Representatives
Office Clerks
General & Operations Managers
Accountants & Auditors
Executive Secretaries & Administrative Assistants
Secretaries
Supervisors - Office & Administrative Support Workers
Legal Secretaries
Receptionists & Information Clerks
Financial Managers

Northwest Workforce Investment Area (WIA)

Education (ED)

Industries Showing...*

...Employment Growth

Elementary and secondary schools
Colleges and universities
School and employee bus transportation
Child day care services
Junior colleges

... Employment Decline

Educational support services

Notes:

*Employment growth and decline determined from 1995 to 2006.

**This graph displays the percent change of each year compared to the base year of 1995.

***Based on occupations from the statewide High Priority Occupations list effective July 1, 2007 through June 30, 2008.



CENTER FOR
WORKFORCE INFORMATION
AND ANALYSIS

Department of Labor & Industry

www.paworkstats.state.pa.us

Email: workforceinfo@state.pa.us

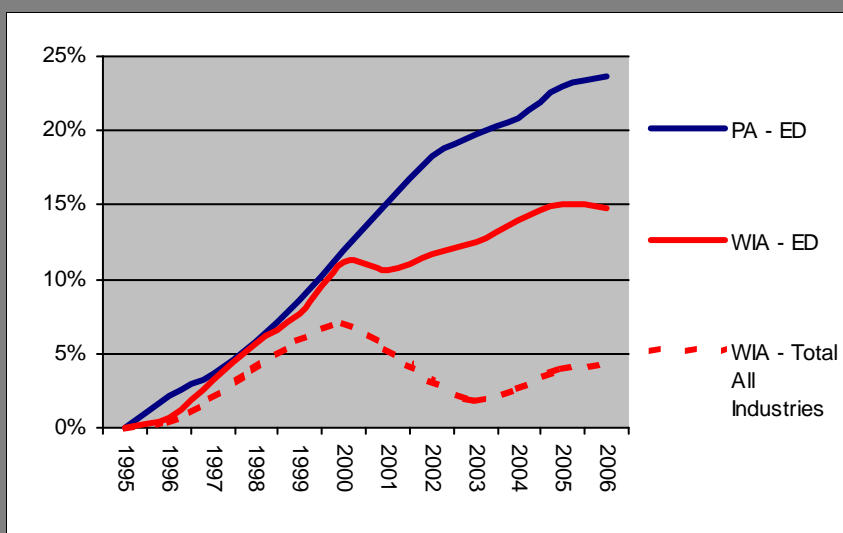
Toll-free: 877-493-3282

December 2007

ED Cluster Statistics

WIA Cluster Employment (2006)	20,657
Percent of Total Area Employment (2006)	9.72%
Employment Growth (1995-2006)	2,657
Employment Percent Growth (1995-2006)	14.76%
Average Annual Wage (2006)	\$34,520
Average Size of Employer Units (2006)	33.7

Percent Change in Employment from 1995**



Select High Priority Occupations***

Secondary School Teachers - Math, Science and Foreign Language
Elementary School Teachers
Teacher Assistants
Middle School Teachers - Math, Science and Foreign Language
Child Care Workers
Secretaries
Executive Secretaries & Administrative Assistants
Education Administrators, Elementary & Secondary Schools
Educational, Vocational & School Counselors
Education Administrators, Postsecondary

Northwest Workforce Investment Area (WIA)

Information and Communication Services (ICS)

Industries Showing...*

...Employment Growth

Engineering services
 Internet service providers
 Directory and mailing list publishers
 Custom computer programming services
 Computer systems design services

... Employment Decline

Newspaper publishers
 Computer facilities management services
 Testing laboratories
 Telecommunications resellers
 Radio stations

Notes:

*Employment growth and decline determined from 1995 to 2006.

**This graph displays the percent change of each year compared to the base year of 1995.

***Based on occupations from the statewide High Priority Occupations list effective July 1, 2007 through June 30, 2008.



CENTER FOR
WORKFORCE INFORMATION
 AND ANALYSIS

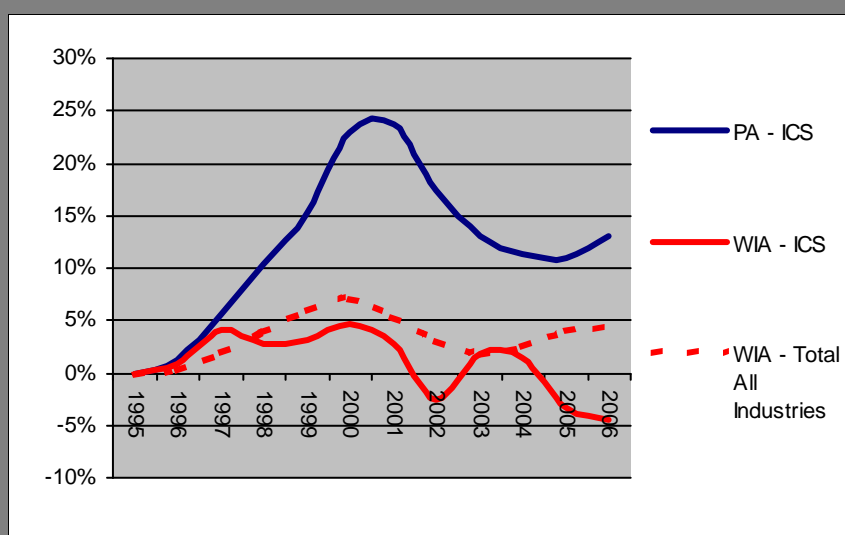
Department of Labor & Industry
www.paworkstats.state.pa.us
 Email: workforceinfo@state.pa.us
 Toll-free: 877-493-3282

December 2007

ICS Cluster Statistics

WIA Cluster Employment (2006)	4,211
Percent of Total Area Employment (2006)	1.98%
Employment Growth (1995-2006)	-200
Employment Percent Growth (1995-2006)	-4.53%
Average Annual Wage (2006)	\$41,149
Average Size of Employer Units (2006)	12.5

Percent Change in Employment from 1995**



Select High Priority Occupations***

Computer Software Engineers, Applications
 Customer Service Representatives
 Computer Programmers
 Computer Software Engineers, Systems Software
 Office Clerks
 Computer Systems Analysts
 Computer Support Specialists
 Telecommunications Line Installers & Repairers
 General & Operations Managers
 Network & Computer Systems Administrators

Northwest Workforce Investment Area (WIA)

Life Sciences (LS)

Industries Showing...*

...Employment Growth

Continuing care retirement communities
 Offices of physicians, except mental health
 Outpatient mental health centers
 Residential mental and substance abuse care
 Offices of mental health physicians

... Employment Decline

Surgical appliance and supplies manufacturing
 Psychiatric and substance abuse hospitals
 Direct life insurance carriers
 Nursing care facilities
 Administration of public health programs

Notes:

*Employment growth and decline determined from 1995 to 2006.

**This graph displays the percent change of each year compared to the base year of 1995.

***Top occupations selected by percent of employment and number of openings.



CENTER FOR
WORKFORCE INFORMATION
 AND ANALYSIS

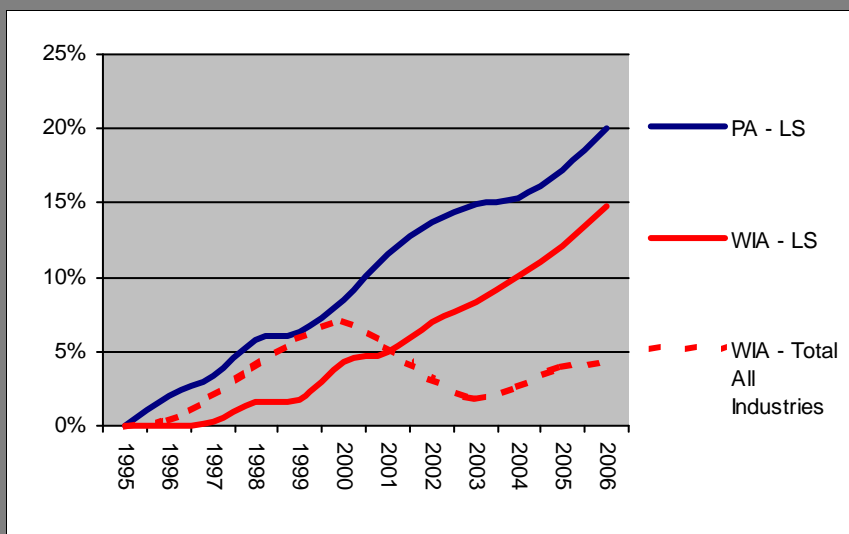
Department of Labor & Industry
www.paworkstats.state.pa.us
 Email: workforceinfo@state.pa.us
 Toll-free: 877-493-3282

December 2007

LS Cluster Statistics

WIA Cluster Employment (2006)	33,968
Percent of Total Area Employment (2006)	15.98%
Employment Growth (1995-2006)	4,364
Employment Percent Growth (1995-2006)	14.74%
Average Annual Wage (2006)	\$36,252
Average Size of Employer Units (2006)	25.1

Percent Change in Employment from 1995**



Select Top Occupations***

- Registered Nurses
- Nursing Aides, Orderlies & Attendants
- Licensed Practical & Licensed Vocational Nurses
- Home Health Aides
- Receptionists & Information Clerks
- Medical Assistants
- Personal & Home Care Aides
- Office Clerks
- Cashiers
- Emergency Medical Technicians & Paramedics

Northwest Workforce Investment Area (WIA)

Life Sciences - Bio-Medical (LS-BM)

Industries Showing...*

...Employment Growth

Medical laboratories
Diagnostic imaging centers
Dental laboratories

... Employment Decline

Surgical appliance and supplies manufacturing
Physical, engineering and biological research
Social science and humanities research

Notes:

*Employment growth and decline determined from 1995 to 2006.

**This graph displays the percent change of each year compared to the base year of 1995.

***Based on occupations from the statewide High Priority Occupations list effective July 1, 2007 through June 30, 2008.



CENTER FOR
WORKFORCE INFORMATION
AND ANALYSIS

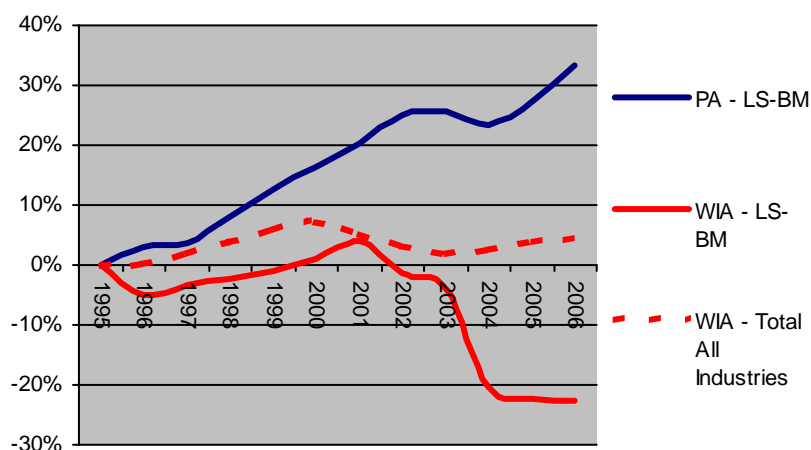
Department of Labor & Industry
www.paworkstats.state.pa.us
Email: workforceinfo@state.pa.us
Toll-free: 877-493-3282

December 2007

LS-BM Cluster Statistics

WIA Cluster Employment (2006)	1,657
Percent of Total Area Employment (2006)	0.78%
Employment Growth (1995-2006)	-488
Employment Percent Growth (1995-2006)	-22.75%
Average Annual Wage (2006)	\$43,952
Average Size of Employer Units (2006)	23.7

Percent Change in Employment from 1995**



Select High Priority Occupations***

Biological Technicians
Biochemists & Biophysicists
Sales Representatives, Scientific & Technical
Chemists
Executive Secretaries & Administrative Assistants
Medical & Clinical Laboratory Technicians
Secretaries
General & Operations Managers
Medical & Clinical Laboratory Technologists
Medical Scientists

Northwest Workforce Investment Area (WIA)

Life Sciences - Health Care (LS-HC)

Industries Showing...*

...Employment Growth

Continuing care retirement communities
 Offices of physicians, except mental health
 Outpatient mental health centers
 Residential mental and substance abuse care
 Offices of mental health physicians

... Employment Decline

Psychiatric and substance abuse hospitals
 Direct life insurance carriers
 Nursing care facilities
 Administration of public health programs
 All other outpatient care centers

Notes:

*Employment growth and decline determined from 1995 to 2006.

**This graph displays the percent change of each year compared to the base year of 1995.

***Based on occupations from the statewide High Priority Occupations list effective July 1, 2007 through June 30, 2008.



CENTER FOR
WORKFORCE INFORMATION
 AND ANALYSIS

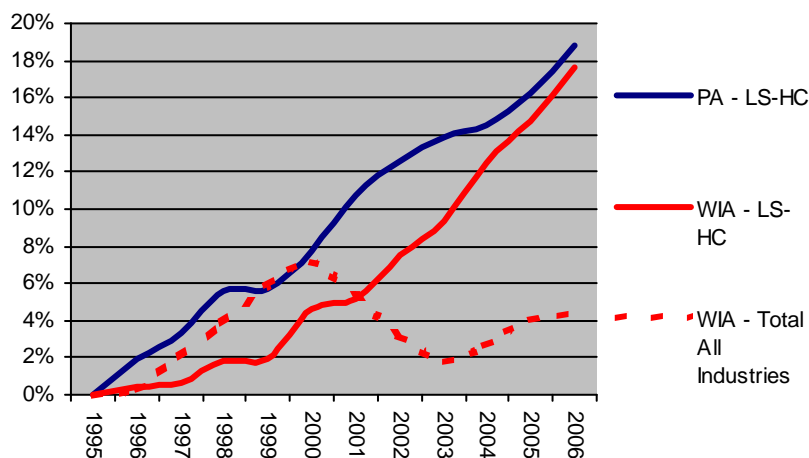
Department of Labor & Industry
www.paworkstats.state.pa.us
 Email: workforceinfo@state.pa.us
 Toll-free: 877-493-3282

December 2007

LS-HC Cluster Statistics

WIA Cluster Employment (2006)	32,311
Percent of Total Area Employment (2006)	15.20%
Employment Growth (1995-2006)	4,852
Employment Percent Growth (1995-2006)	17.67%
Average Annual Wage (2006)	\$35,857
Average Size of Employer Units (2006)	25.2

Percent Change in Employment from 1995**



Select High Priority Occupations***

Registered Nurses
 Nursing Aides, Orderlies & Attendants
 Licensed Practical & Licensed Vocational Nurses
 Home Health Aides
 Medical Assistants
 Personal & Home Care Aides
 Emergency Medical Technicians & Paramedics
 Dental Assistants
 Medical Secretaries
 Dental Hygienists

Northwest Workforce Investment Area (WIA)

Logistics and Transportation (LT)

Industries Showing...*

...Employment Growth

General warehousing and storage
 General freight trucking, long-distance LTL
 Other specialized trucking, long-distance
 General freight trucking, local
 Process and logistics consulting services

... Employment Decline

Couriers
 Pipeline transportation of natural gas
 Other specialized trucking, local
 Used household and office goods moving

Notes:

*Employment growth and decline determined from 1995 to 2006.

**This graph displays the percent change of each year compared to the base year of 1995.

***Based on occupations from the statewide High Priority Occupations list effective July 1, 2007 through June 30, 2008.



CENTER FOR
WORKFORCE INFORMATION
 AND ANALYSIS

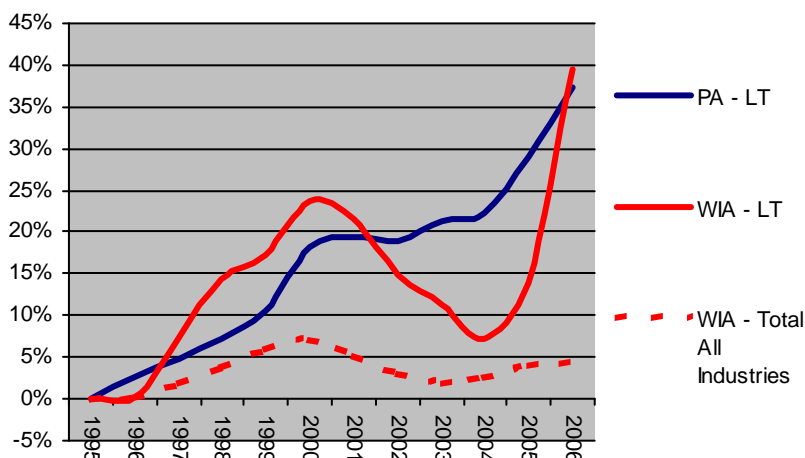
Department of Labor & Industry
www.paworkstats.state.pa.us
 Email: workforceinfo@state.pa.us
 Toll-free: 877-493-3282

December 2007

LT Cluster Statistics

WIA Cluster Employment (2006)	4,094
Percent of Total Area Employment (2006)	1.93%
Employment Growth (1995-2006)	1,160
Employment Percent Growth (1995-2006)	39.54%
Average Annual Wage (2006)	\$39,182
Average Size of Employer Units (2006)	14.4

Percent Change in Employment from 1995**



Select High Priority Occupations***

Truck Drivers, Heavy & Tractor-Trailer
 Laborers & Freight, Stock & Material Movers
 Industrial Truck & Tractor Operators
 Truck Drivers, Light or Delivery Services
 Bus, Truck & Diesel Engine Mechanics
 Supervisors - Transportation & Vehicle Operators
 General & Operations Managers
 Customer Service Representatives

Northwest Workforce Investment Area (WIA)

Lumber, Wood and Paper (LWP)

Industries Showing...*

...Employment Growth

Home centers
Miscellaneous wood product manufacturing
Lumber and wood merchant wholesalers
Sawmills
Pulp mills

... Employment Decline

Other building material dealers
Nonupholstered wood household furniture mfg.
Corrugated and solid fiber box manufacturing
Hardwood veneer and plywood manufacturing
Cut stock, resawing lumber, and planing

Notes:

*Employment growth and decline determined from 1995 to 2006.

**This graph displays the percent change of each year compared to the base year of 1995.

***Based on occupations from the statewide High Priority Occupations list effective July 1, 2007 through June 30, 2008.



CENTER FOR
WORKFORCE INFORMATION
AND ANALYSIS

Department of Labor & Industry

www.paworkstats.state.pa.us

Email: workforceinfo@state.pa.us

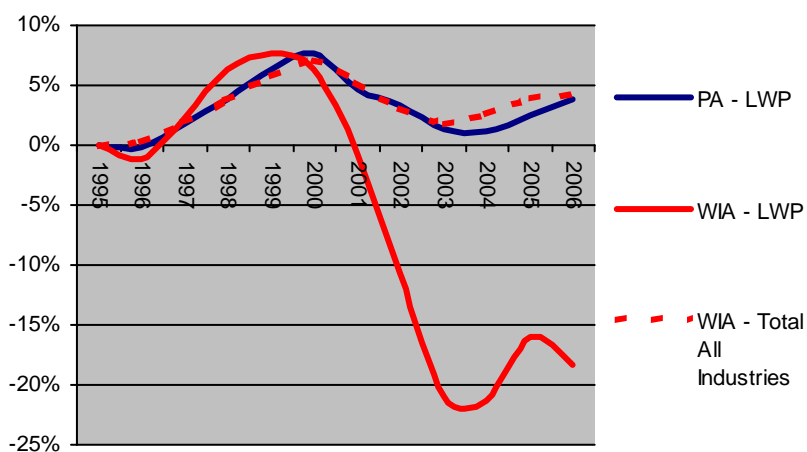
Toll-free: 877-493-3282

December 2007

LWP Cluster Statistics

WIA Cluster Employment (2006)	4,430
Percent of Total Area Employment (2006)	2.08%
Employment Growth (1995-2006)	-999
Employment Percent Growth (1995-2006)	-18.40%
Average Annual Wage (2006)	\$28,277
Average Size of Employer Units (2006)	17.3

Percent Change in Employment from 1995**



Select High Priority Occupations***

Sales Representatives
Industrial Truck & Tractor Operators
Cabinetmakers & Bench Carpenters
Truck Drivers, Heavy & Tractor-Trailer
General & Operations Managers
Paper Goods Machine Oprs/Tenders
Carpenters
Woodworking Machine Oprs/Tenders
Printing Machine Operators
Supervisors - Production & Operating Workers